



NEWS RELEASE

For more information, contact
John O'Reilly at 815.469.9100, ext. 302
Laura Butler, Rheem Mktg. Comm. Mgr.,
at laura.butler@rheem.com

Rheem Unveils the Industry's First Tankless Water Heater Sizing Software

***Available at rheemtankless.com, EZ-Spec will specify the tankless model
and the number of units recommended for typical tankless applications.***

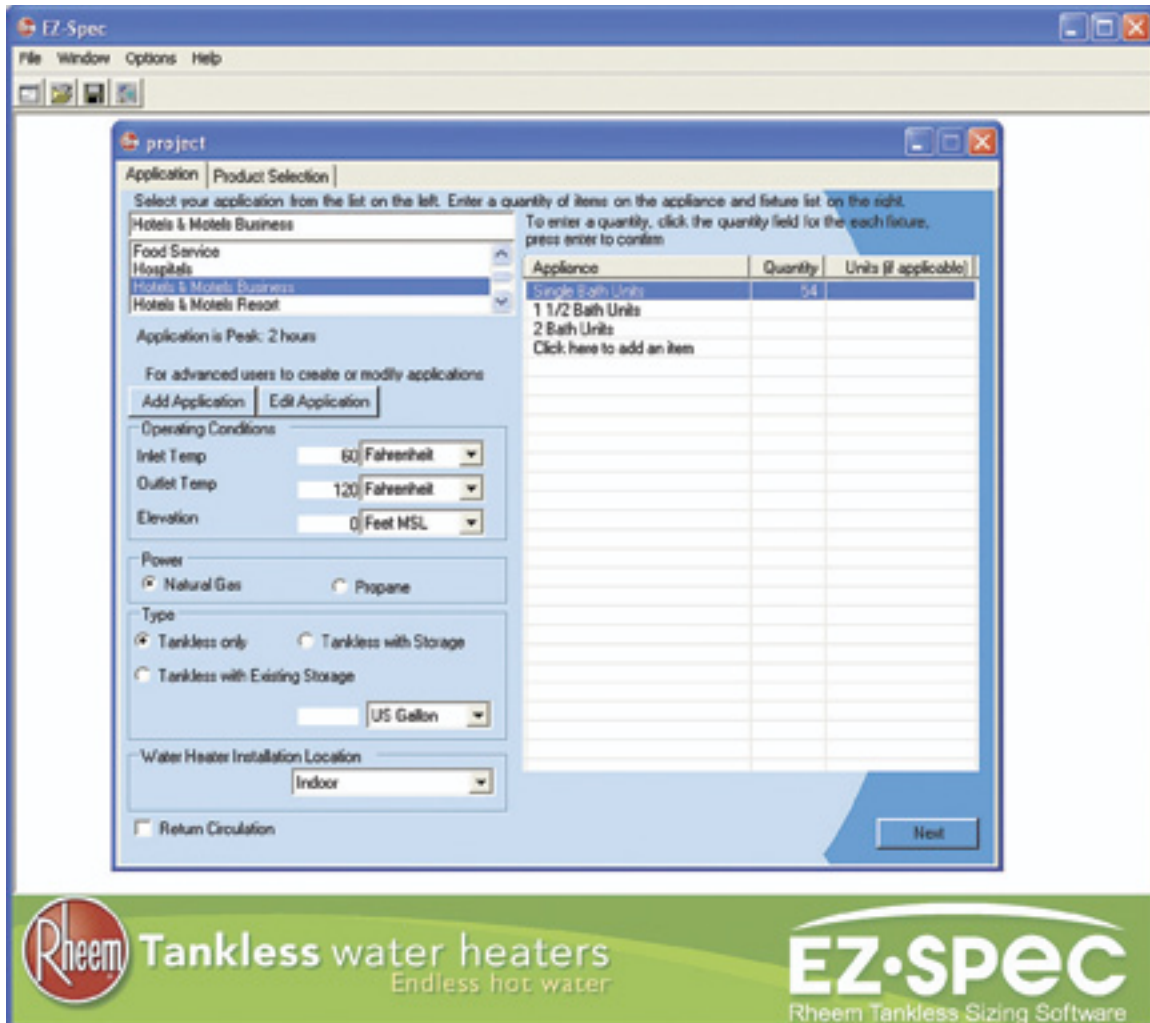
MONTGOMERY, ALABAMA (SEPTEMBER 13, 2007) — At last, contractors and specifiers can put aside all those cumbersome spreadsheets. Rheem Water Heating recently became the first industry manufacturer to offer computer software specifically intended for sizing tankless water heaters for residential and commercial installations.



Based on the widely used CertiSpec³ software for Rheem-Ruud commercial water heaters, the new EZ-Spec™ tankless software application is now available for download at www.rheemtankless.com in the "Products" menu.

Simple to use, the new EZ-Spec offers drop-down menus and easy-to-understand fields. The user selects a specific application (single-family home, townhome/apartment; restaurant, school, health club, laundromat, hotel, etc.) from a drop-down menu and then enters relevant sizing data, fuel type, number of hot-water fixtures, input and output water temperatures, and flow rates. To insure accuracy, the program incorporates the specific flow rates for an extensive array of residential and commercial hot-water appliances.

Rheem EZ-Spec Tankless Sizing Software, continued



With user-supplied input, the program will indicate the optimal Rheem tankless solution for a given application in a few seconds, including suggested accessories to facilitate the installation. Installers can also generate a summary report, suitable to print or e-mail. The report also includes the project name and customer contact information.

A year in development, the EZ-Spec tankless sizing software “incorporates 100 years of water heater-sizing experience at Rheem and Ruud, covering a wide variety of applications,” comments Shaun Thomas, a Rheem Water Heating engineer who headed the project. “Ease-of-use, speed and accuracy were our top goals in developing the tankless sizing application, but the program goes beyond electronic numbers-crunching. Our calculations are supported and enhanced by our accumulated knowledge of real-world applications.”

Rheem EZ-Spec Tankless Sizing Software, continued

EZ-Spec requires the Microsoft Windows XP operating system. Users can download the new software any time by accessing the “Products” menu on the rheemtankless.com website.

NOTE: Publication-quality photograph of the images shown in this press release and others can be downloaded at the following location on the web:

<http://www.LNCmail.com/pr/rh0738-ezspec.html>

When the image appears, right-click on image to download. Then convert the saved image to the proper resolution for your publication.

RHEEM MANUFACTURING COMPANY, headquartered in Atlanta, is a leading worldwide provider of total comfort systems including water heaters, heating and air conditioning equipment, pool and spa heaters, and boilers. Rheem Water Heating, which produces tank-type, tankless and solar units for residential and commercial applications, maintains manufacturing operations in Montgomery and Eagan, Minnesota, as well as two facilities in Mexico: Nuevo Laredo and Mexicali. The division also operates a Canadian sales and distribution facility in Hamilton, Ontario.

###